

## STM32L4 Discovery Kit IoT Node Microsoft Azure Connectivity Hands-On Seminar Checklist

Welcome to the STM32L4 Discovery Kit IoT Node Microsoft Azure Connectivity Hands-On Seminar!

Please follow all installation steps (starting on page 2) and check off each item below prior to the Seminar training day.

- I have a compatible laptop.
  - A Windows® Laptop (Windows 7, Windows 8, or Windows 10)
  - MacBook running Windows (Parallels, VM Fusion, etc)
  - Note: Administrator rights are needed for software and driver installation.
  
- I have a compatible web browser installed on my laptop.
  - Microsoft Edge or Google Chrome is required for one of the labs (Note: Internet Explorer is not compatible).
  
- I have copied the Seminar Installer and .bin files from Dropbox to the Desktop and installed it (this will install the latest Java, STM32CubeMX, STM32CubeL4 HAL, Tera Term, STM32 ST-Link Utility and Azure Device Explorer, and extract seminar files to C:\STM32L4AzureSeminar\)
  
- I have installed Keil MDK-ARM v5.24a from C:\STM32L4AzureSeminar\Keil\
  
- I have installed the STM32L4 Keil MDK-ARM Device pack.
  
- I have run the temporary license activation for MDK-ARM (or I already have a full license).

If you have successfully completed all the above steps, you are all set!

## 1. Download the contents of the Dropbox folder to your Desktop

Download all the files in the Dropbox folder to your Desktop folder.

STM32L4AzureSeminar\_Installer.exe  
STM32L4AzureSeminar\_Installer-1.bin  
STM32L4AzureSeminar\_Installer-2.bin

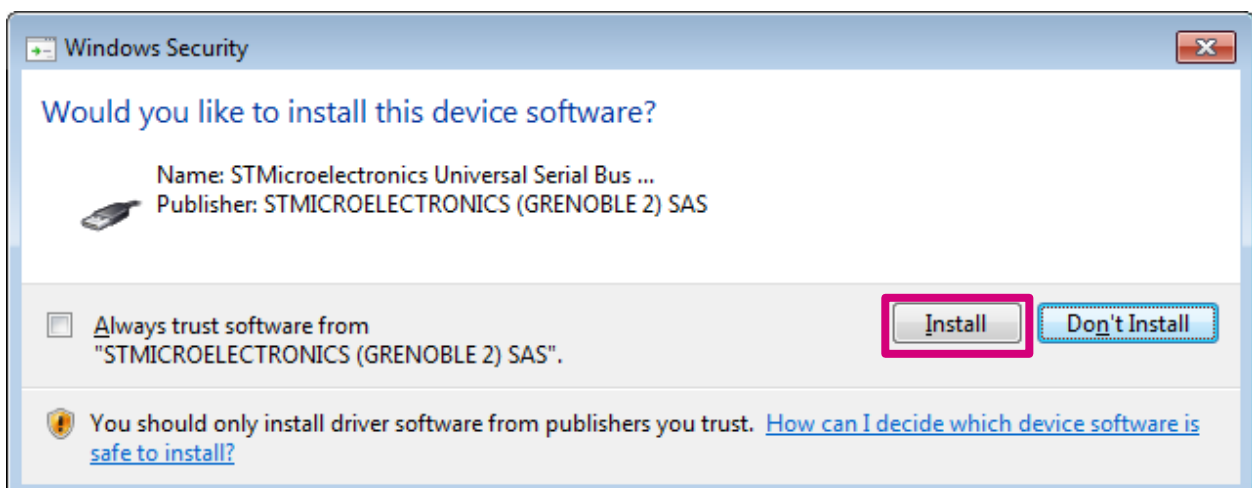
Note: If you use the “Direct download” option at the top right corner of this Dropbox folder, you will get a zip file “STM32L4\_DK\_IoT\_Azure\_Seminar.zip” that includes all the above three files. In that case, please extract the zip file contents to your Desktop before you proceed to the next step.

## 2. Install STM32CubeMX and Seminar Content

On your Desktop, right click on the Seminar Installer **STM32L4AzureSeminar\_Installer.exe** and click on “Run as Administrator” to launch the installer.

This installer will automatically install the latest version of Java, STM32CubeMX, STM32CubeL4 HAL package, Tera Term, STM32 ST-Link Utility (which also installs the ST-LINK/V2 Windows device drivers), and will finally extract other seminar files to **C:\STM32L4AzureSeminar\**

If you see prompts such as the one below, please click “Install” to allow installing the ST-Link Device Drivers (there would be typically two such prompts).



### 3. Install Keil MDK-ARM v5.24a

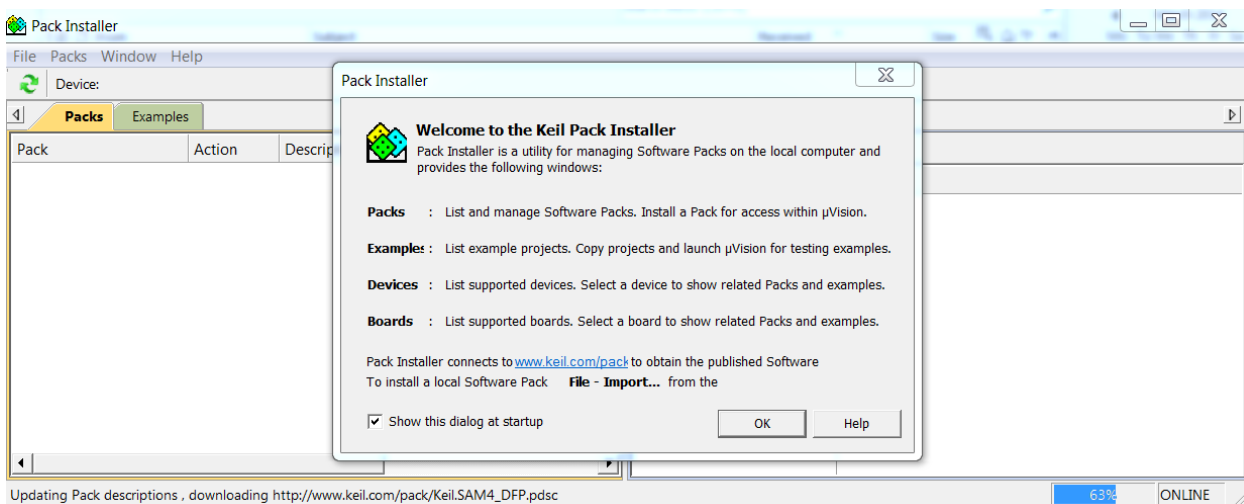
Run the Keil MDK-ARM installer:

**C:\STM32L4AzureSeminar\Keil\MDK524a.EXE**

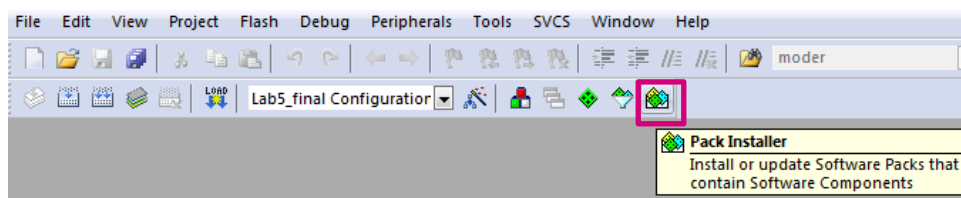
Note the seminar requires Keil MDK-ARM v5.24a. In order to activate the temporary license you need to have this installed. So if you have an earlier version of Keil MDK-ARM, you must install this updated version into a new folder. If you don't wish to do this, your earlier version will probably work, but in case of any compatibility issues with the hands-on lab code, please keep in mind that we may not be able to help debug those issues individually.

### 4. Install Keil MDK-ARM Device Packs

At the end of the Keil MDK-ARM installation, it would prompt you to run the “Pack Installer”. This installs the necessary device support packs to allow MDK-ARM to work with specific device families.



If you have closed that screen, you can launch again by running Keil uVision5 and clicking on the Pack Installer button:



Within the pack installer, click File > Import and then select the following Device Pack to be installed:

- C:\STM32L4AzureSeminar\Keil\Keil.STM32L4xx\_DFP.1.4.0.zip

After the STM32L4 pack is installed (check progress bar at the bottom of the Pack Installer tool), the Pack Installer can be closed.

## 5. Activating the License

Once installed, you can activate a temporary license for the month of your seminar. This license is valid only during the calendar month of your seminar. Double click and run the license installer at this path:

C:\STM32L4AzureWorkshop\Keil\MDK-ARM\_Pro\_Eval\_AddOn\_2017-xx.exe

Note: "xx" corresponds to your calendar month of the seminar, for example 10 = October.